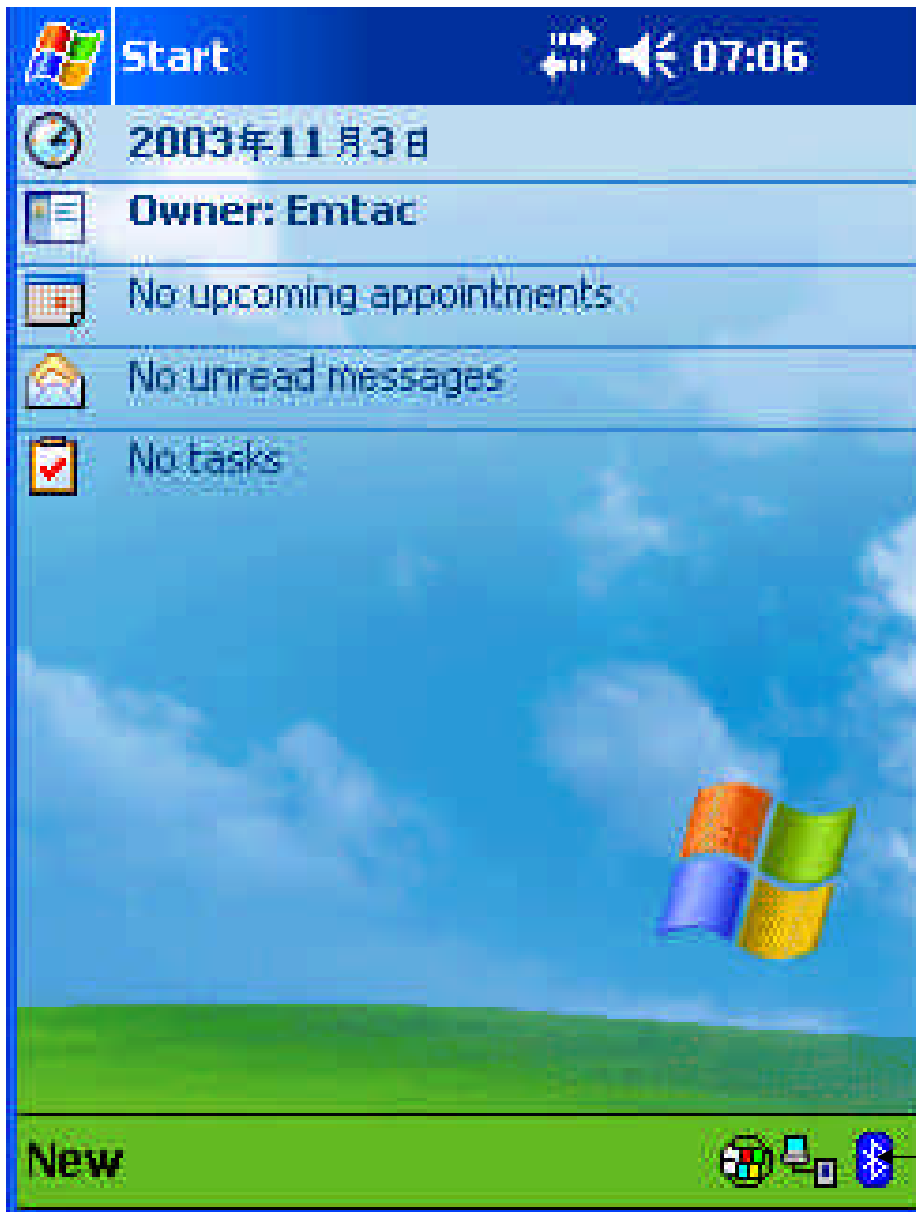


Anslut Clip-On till
PDA med O/S PPC2003



Sätt strömbrytaren på on
på din Clip-On

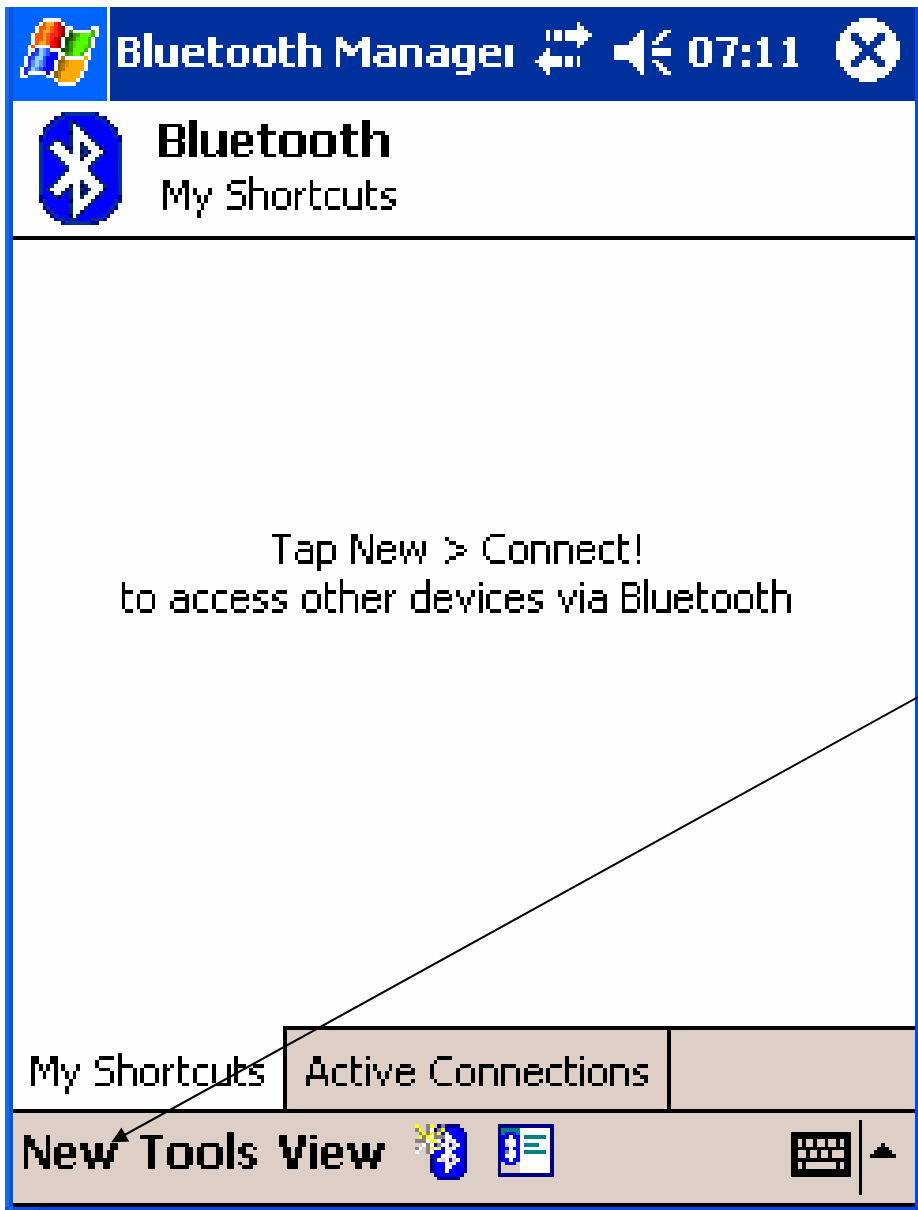
Välj Start\today på PDA:an



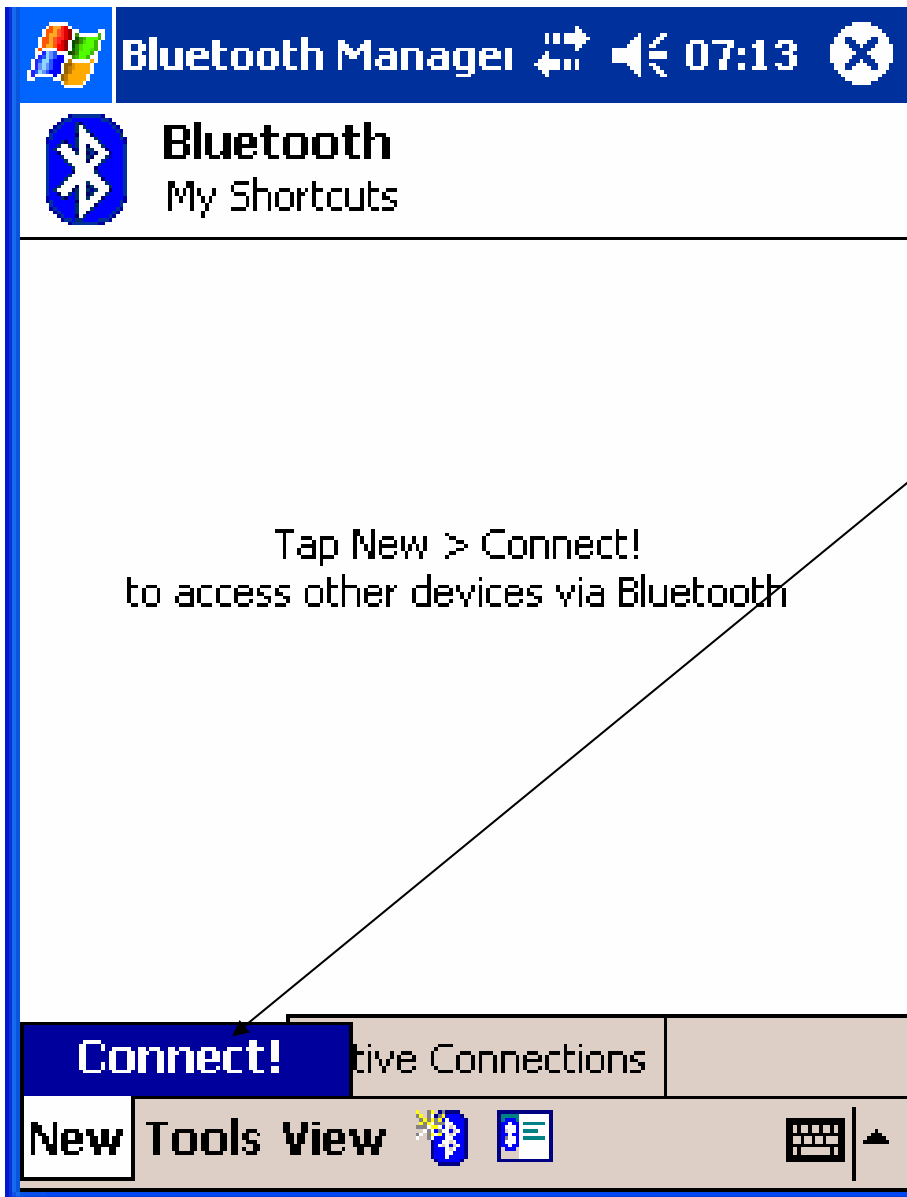
Klicka på bluetooth ikon



Klicka 'Bluetooth Manager'



Klicka 'New'



Klicka 'Connect!'

Connection Wizard 07:14

Bluetooth
Connection Wizard

Explore a Bluetooth device
Discover the services another device offers and create connection shortcuts for them.

Connect to the Internet
Access the Internet using a network access point, a cell phone or another connected Bluetooth device.

Join a personal network
Connect two or more Bluetooth devices to share files, collaborate or play multiplayer games.

Partner with a cell phone
Establish a partnership with a cell

Cancel Next

Välj detta val.

Klicka 'Next'.




Connection Wizard   07:18



Bluetooth Connection Wizard

Explore a Bluetooth device

Device:



<No device selected>
Tap here to choose a device

Markera här

How to use this screen

To select a device, tap inside the device selection box above. After the list appears, choose a device.

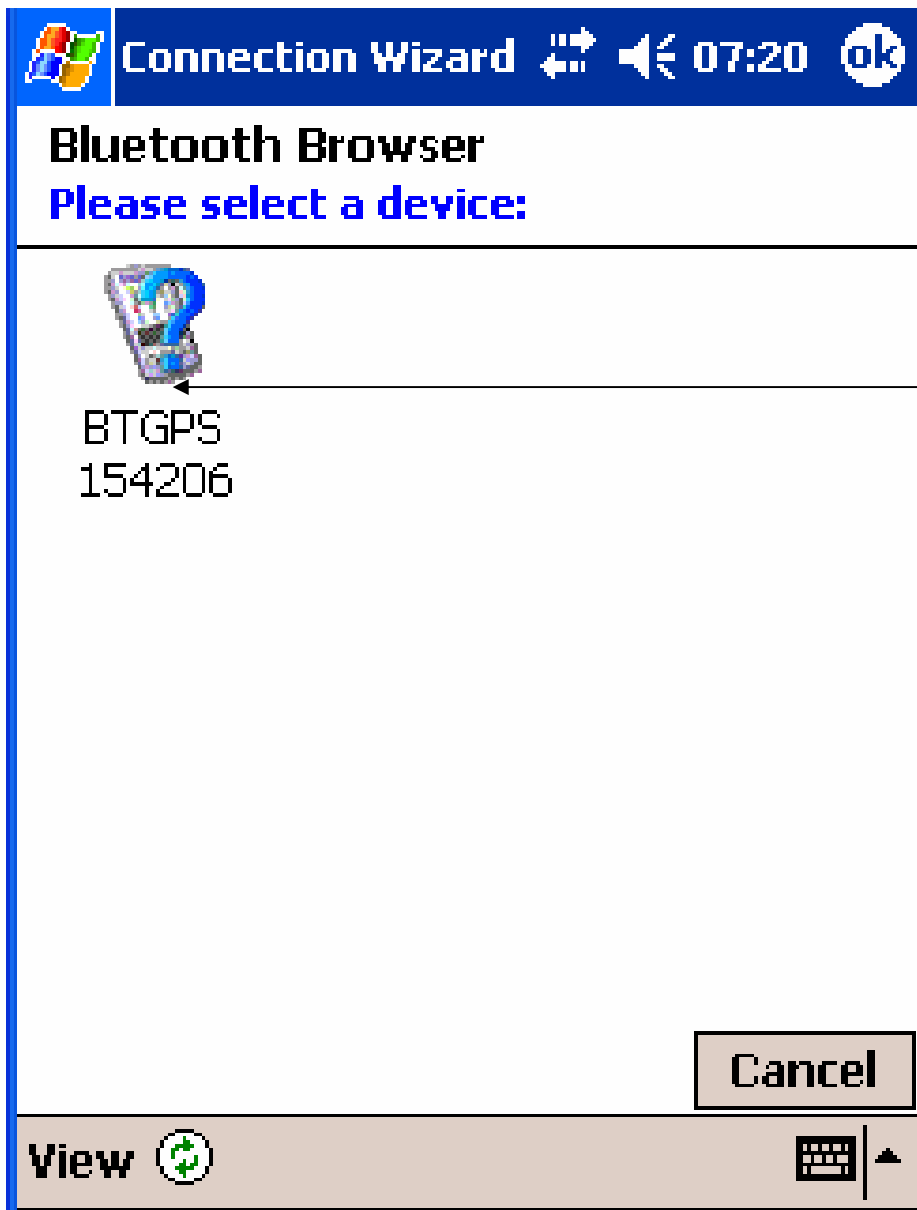
Tap 'Next' to continue or 'Back' to return to the previous screen. To exit without completing the connection, tap 'Cancel'.

 **Cancel**

 **Back**

Next 





Markera ikonen för
ClipOn-BTGPS



Connection Wizard   07:21



Bluetooth Connection Wizard

Explore a Bluetooth device



BTGPS 154206

Service Selection

 Serial Port

Please select the service(s) offered by this device you would like to create connection shortcuts for.

Security

Use a secure, encrypted connection

 **Cancel**

 **Back**

Next 



Markera 'Serial Port'

Tryck på 'Next'



Connection Wizard   07:25



Bluetooth Connection Wizard

Explore a Bluetooth device



BTGPS 154206

Shortcuts created

Connection shortcut(s) for the service(s) you selected were successfully created.

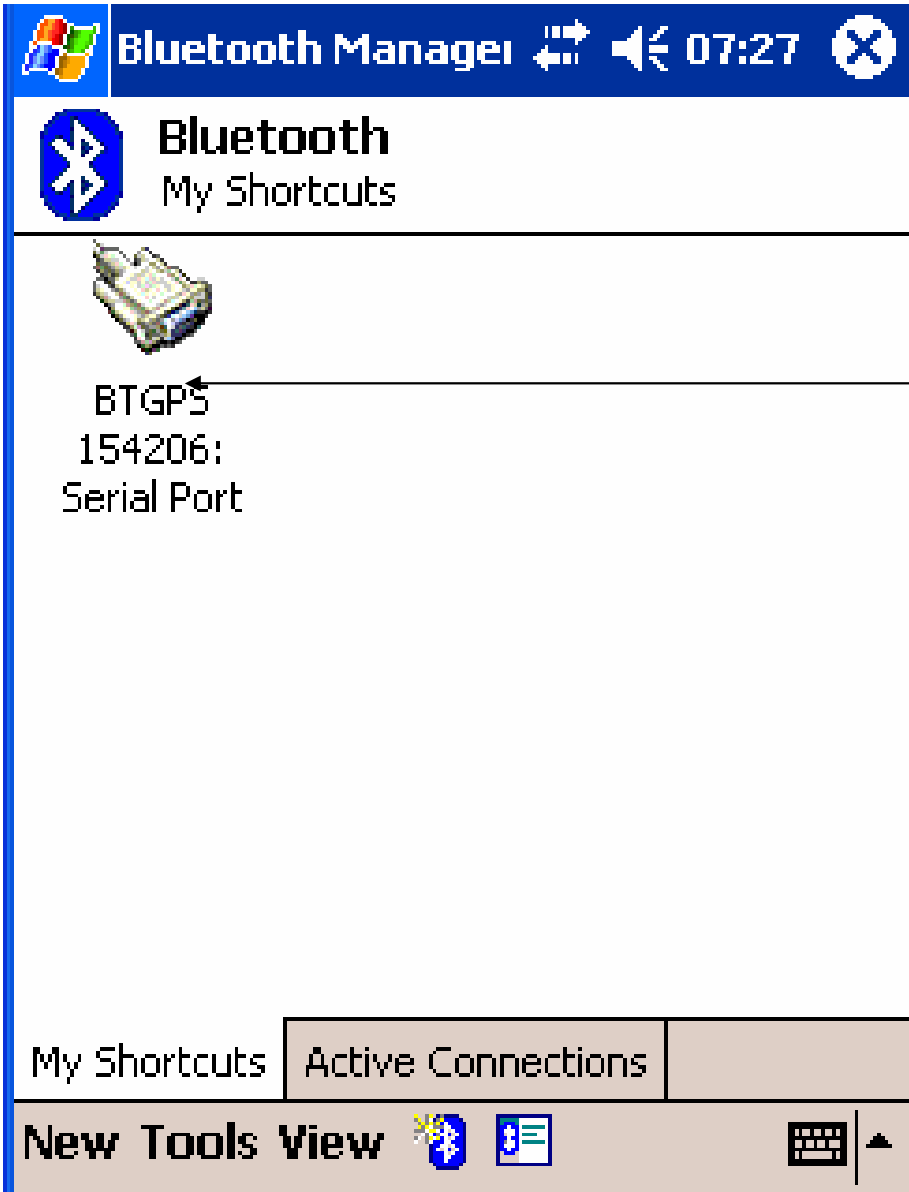
To connect:

From the Bluetooth Manager "My Connections" screen, double-tap the connection. Or tap-and-hold the connection icon and select 'Connect' from the menu.

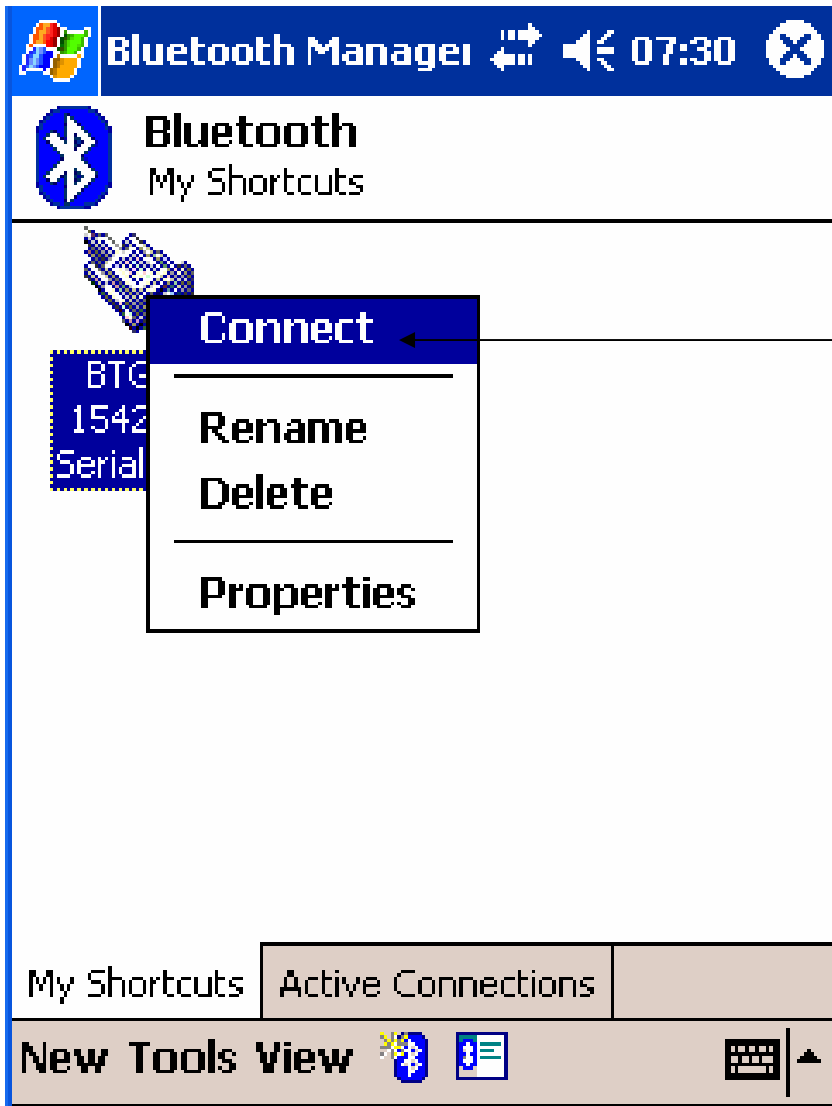
Finish 



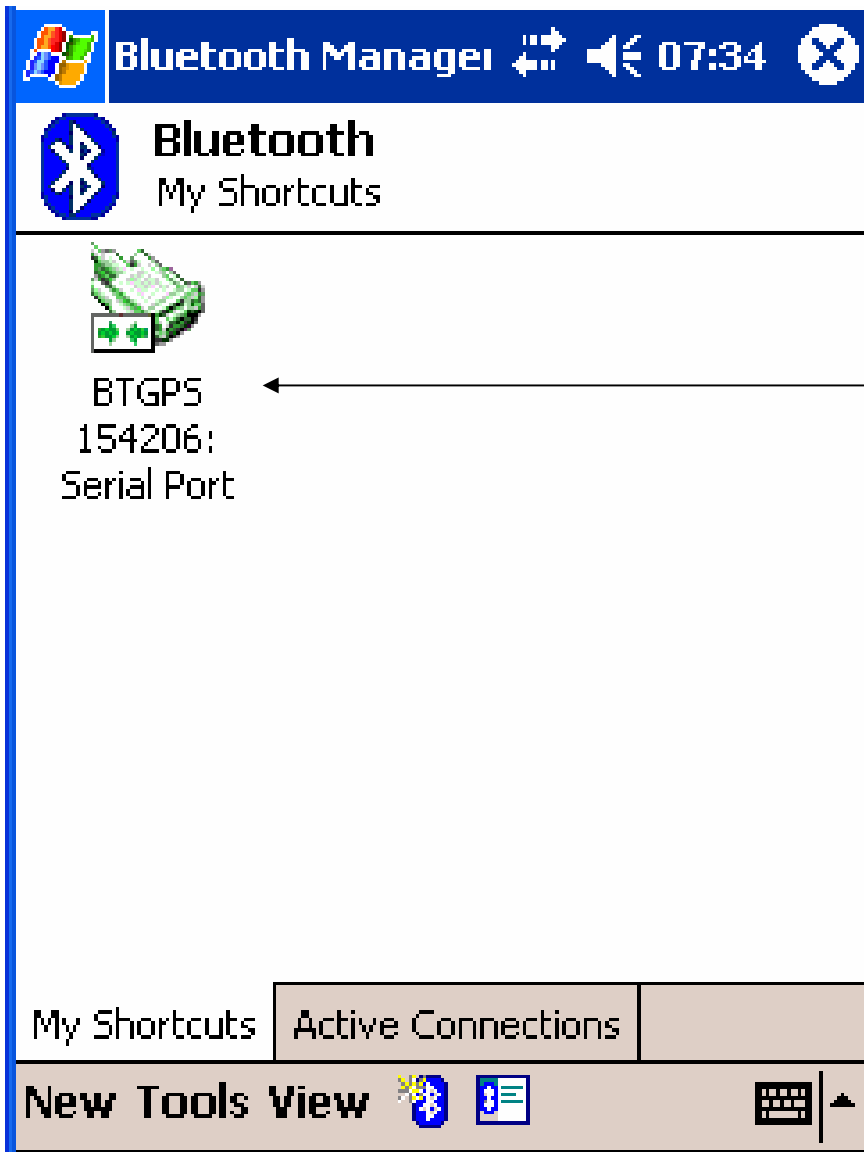
Tryck på 'Finish'



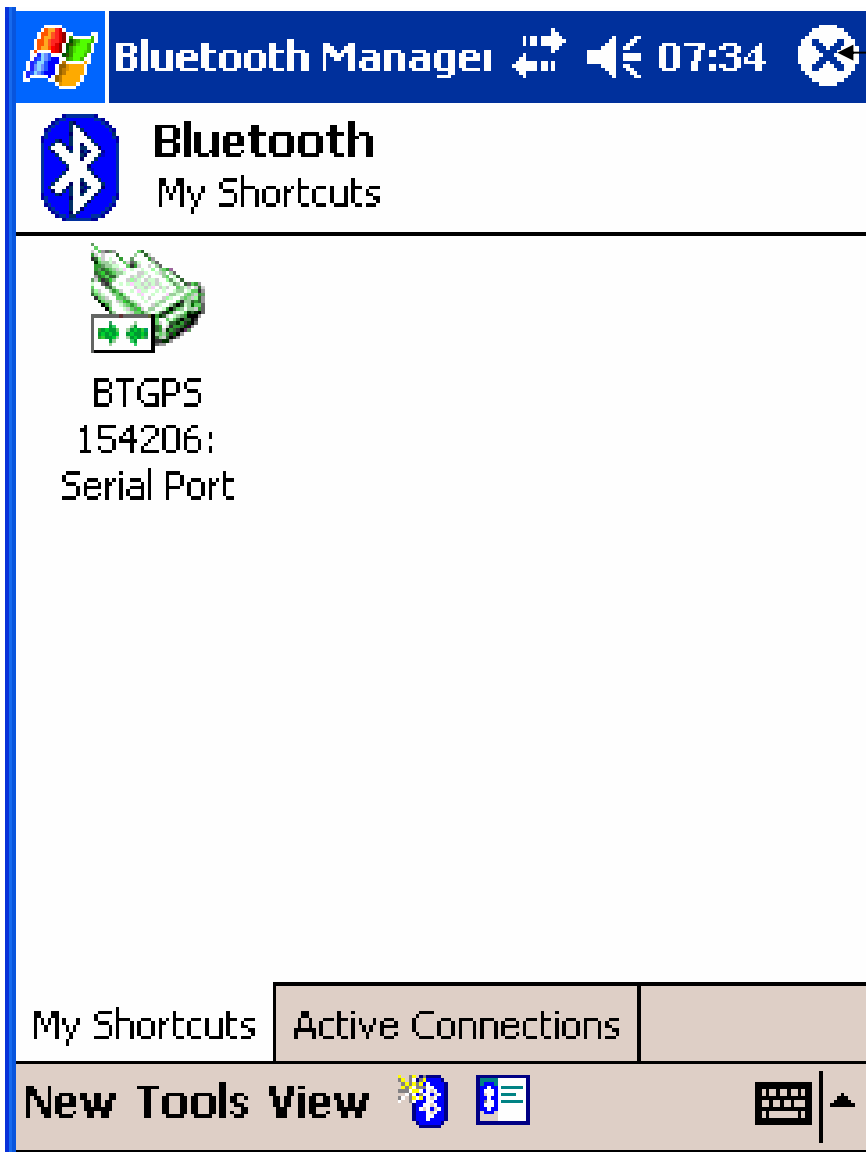
Peka på och håll på
BTGPS ikonen



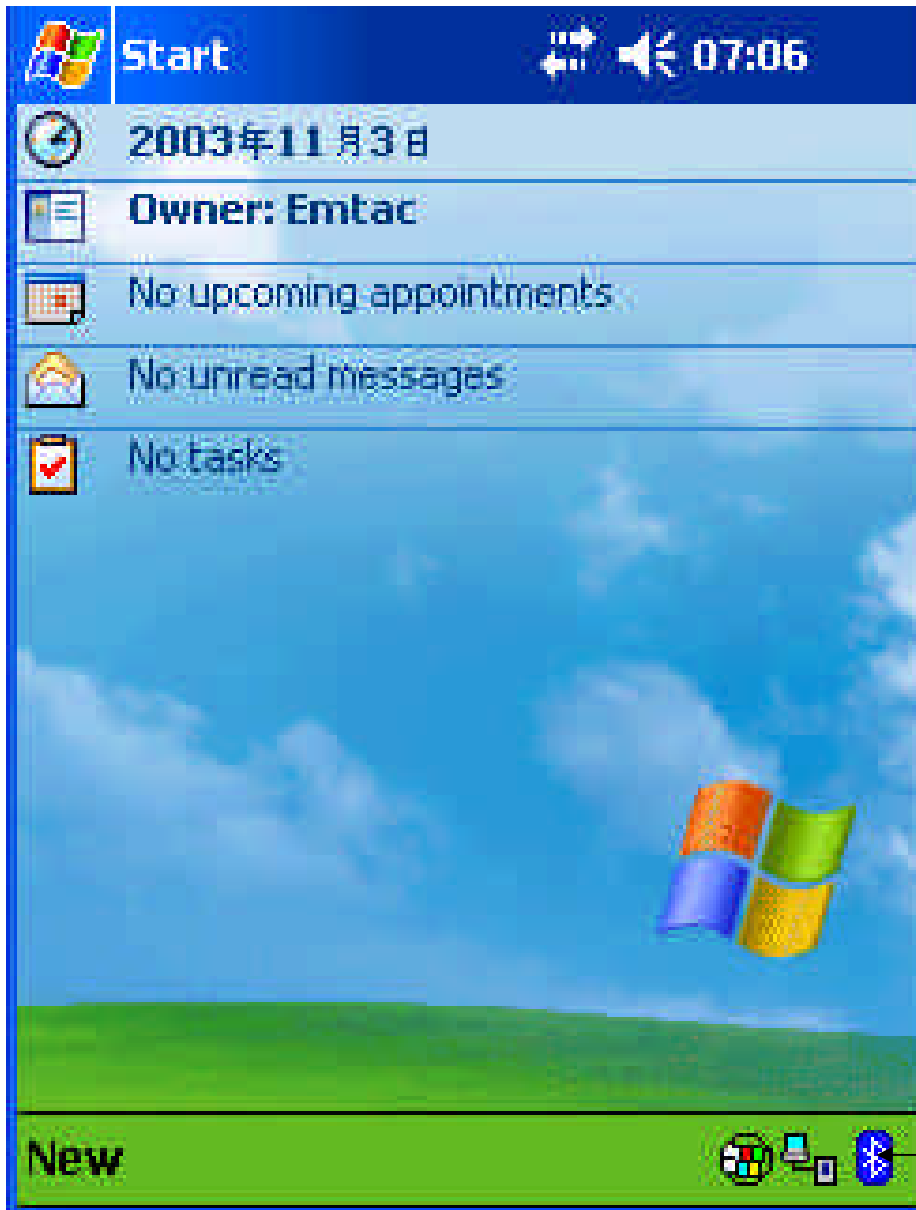
Välj 'Connect'



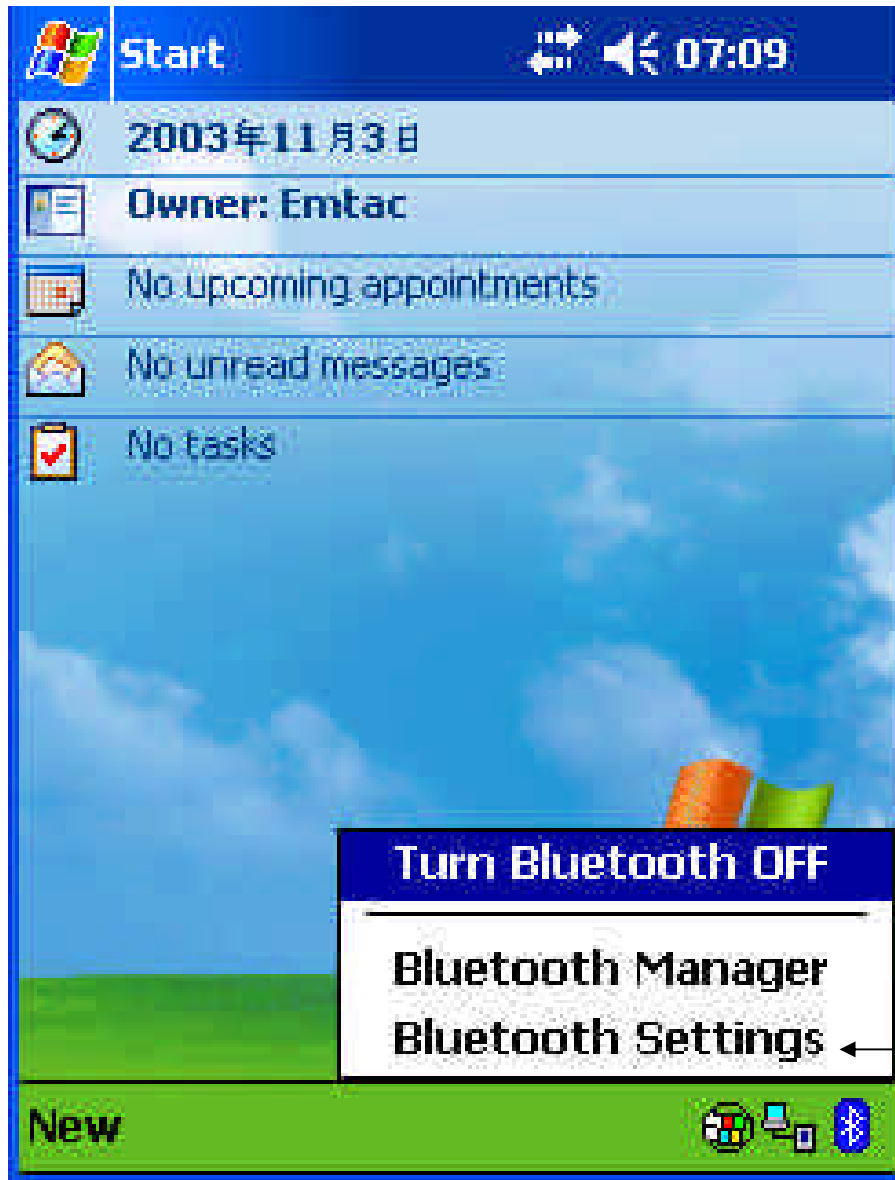
Nu har du anslutit din
blåtands GPStill PDA



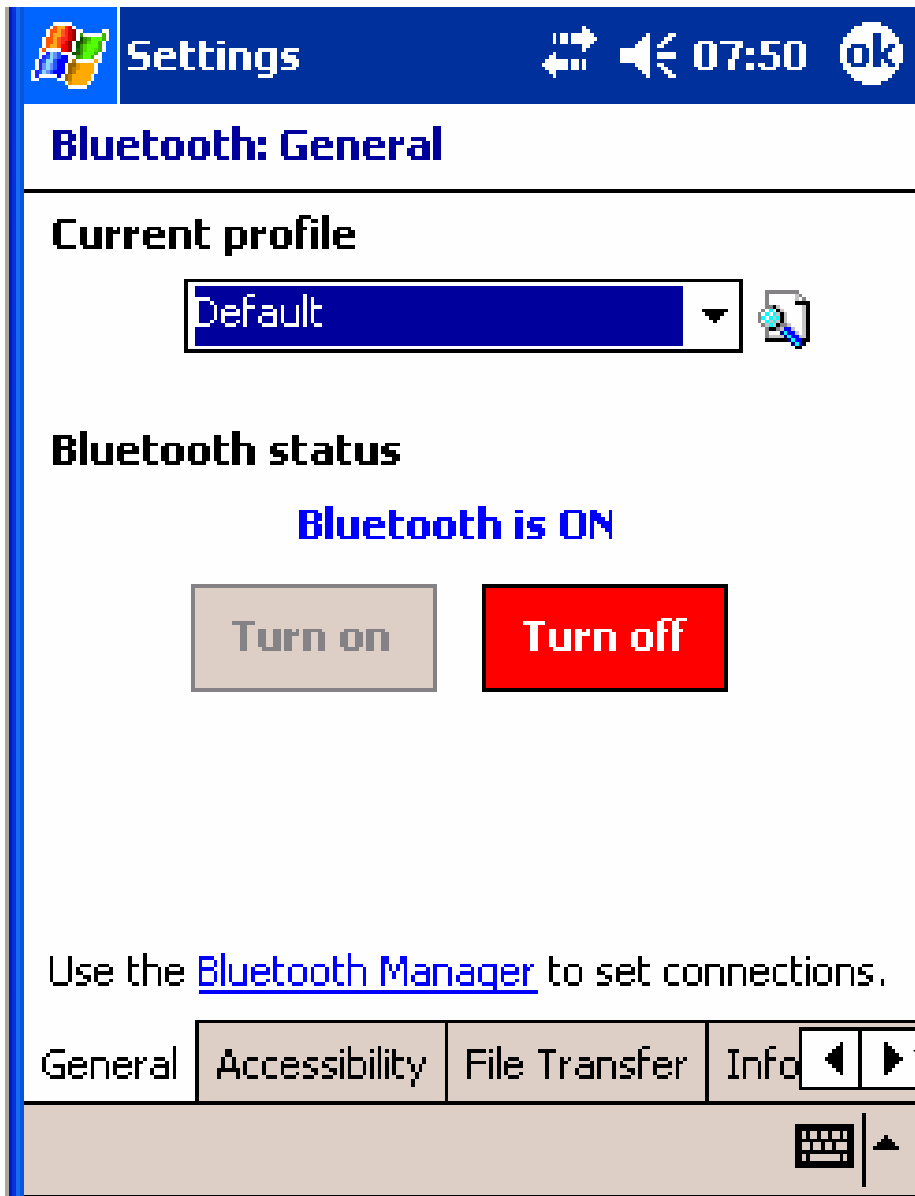
Tryck på 'X' för att gå ur Bluetooth Manager



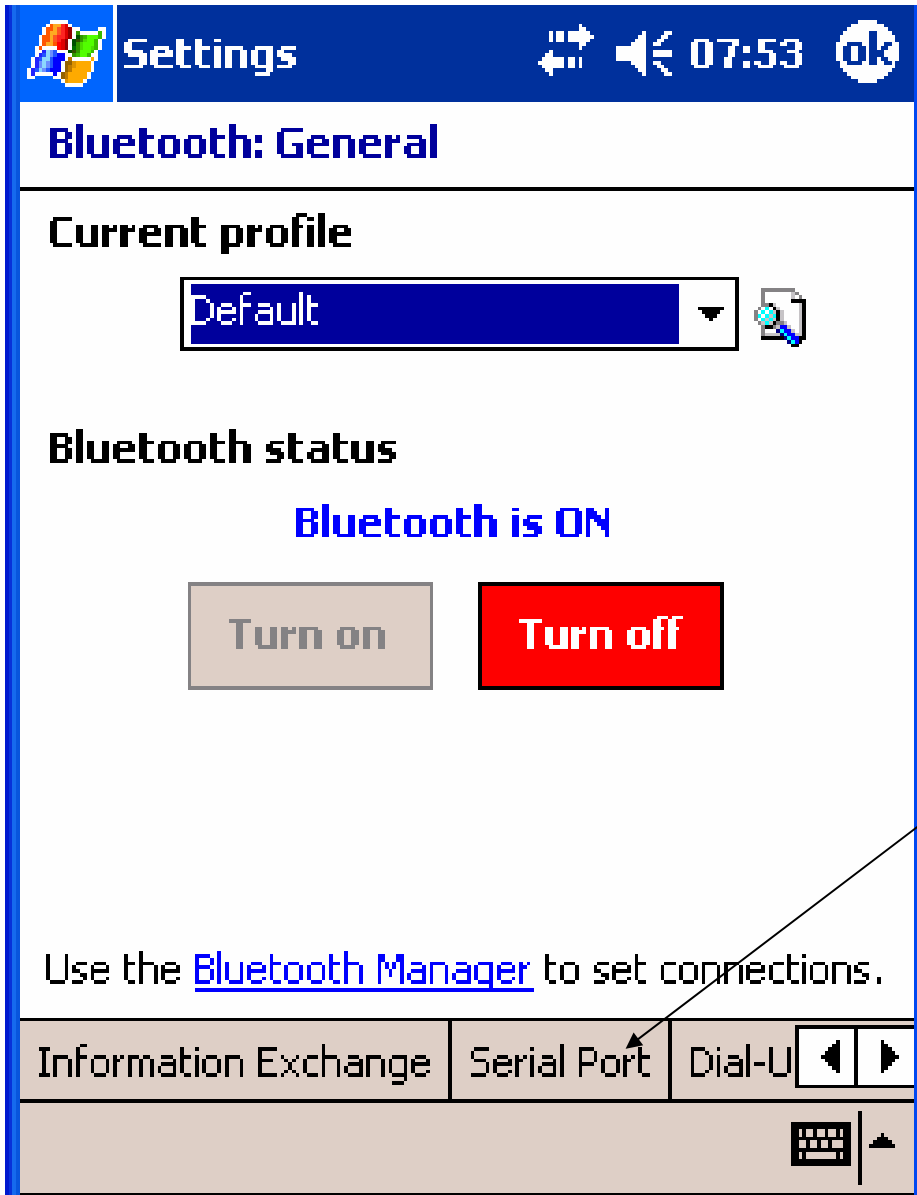
Tryck på Bluetooth ikon igen



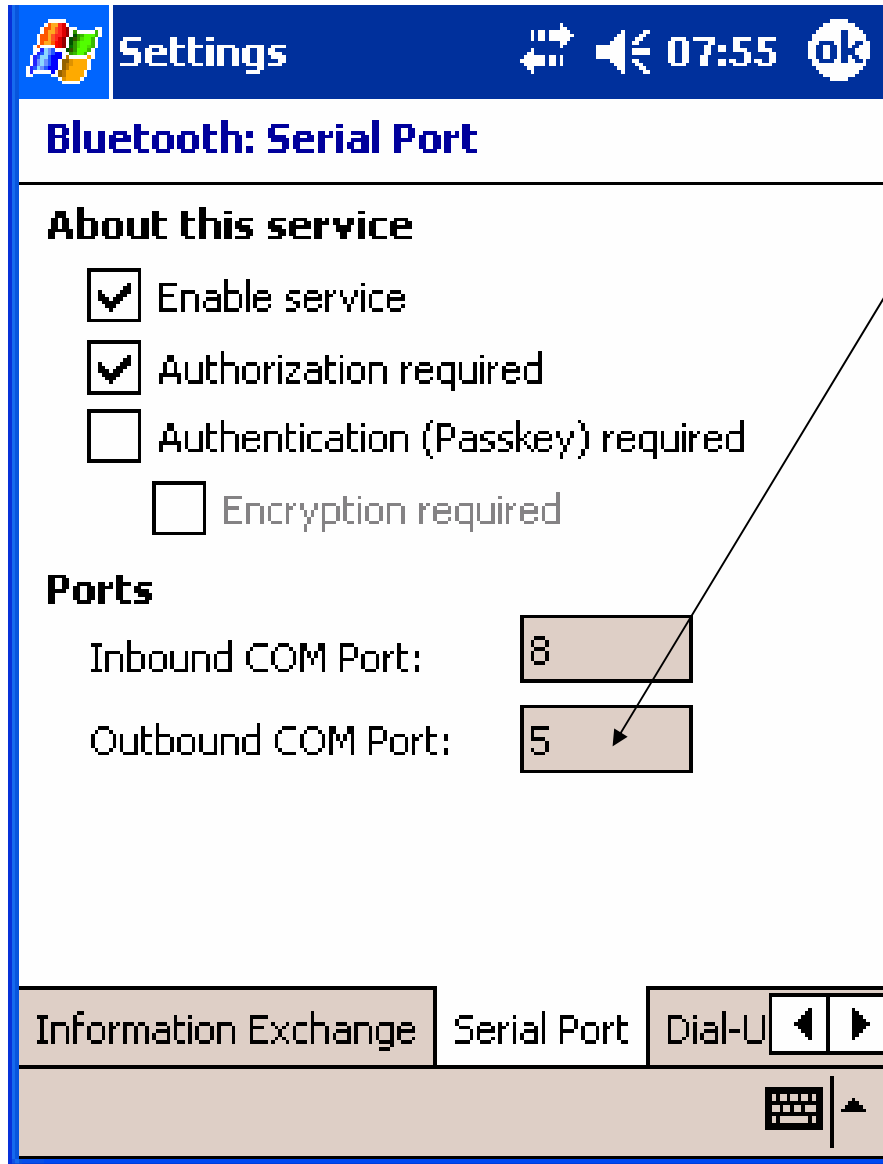
Tryck 'Bluetooth Setting'



Tryck höger pil
3 gånger



Tryck 'Serial Port'



Använd följande nummer
'Outbound Port:' är det
'COM' nummer som
öppnar BTGPS port i
Mjukvaran (ditt program).

det kan vara '5' eller '8',
detta beror på vilken modell
the av handdator du har

Ex.

'5' for iPAQ37xx, 19xx med
PPC2003

'8' for iPAQ54xx, 22xx med
PPC2003